



CREATING HOPE:
MEND BROKEN DREAMS,
ONE YOUNG HEART AT A TIME

WITNESSING THE STRENGTH AND RESILIENCE OF OUR YOUTH



ANNUAL REPORT 2023

CHARITY REGISTRATION NUMBER: 1147599

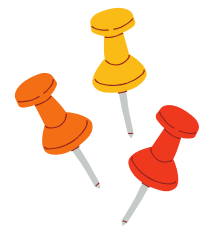


TABLE OF CONTENTS



| | |
|-------------------------------------|----|
| ABOUT KOL BONAICH | 3 |
| OUR GOAL / MESSAGE FROM OUR TRUSTEE | 4 |
| WHO ARE AT-RISK YOUTH? | 5 |
| WHAT WE DO | 6 |
| OUR IMPACT | 9 |
| FUTURE PLANS & STRATEGY | 10 |
| TRUSTEES REPORT | 13 |
| INDEPENDENT EXAMINERS REPORT | 14 |
| STATEMENT OF FINANCIAL ACITIVITES | 15 |
| NOTES OF THE ACCOUNTS | 16 |



ABOUT KOL BONAICH

Kol Bonaich has been a steadfast presence, providing outstanding support to vulnerable & NEET young people.



Belief in Potential: Kol Bonaich believes in the inherent power and potential within each person.



Focused on Empowerment: Kol Bonaich prioritises empowering children and teenagers who are in pain or at risk



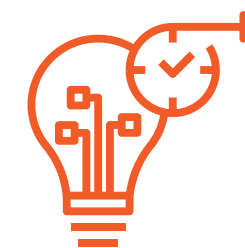
Inclusive and Hopeful: No one is overlooked at Kol Bonaich



Comprehensive Support: Our mission goes beyond immediate needs, aiming to ensure that no one faces their troubles alone.



Creating Brighter Futures: Kol Bonaich helps kids believe in themselves and make their dreams come true, even when things are tough.



MEET
KOL BONAICH



OUR GOAL

Kol Bonaich's goal is to empower individuals facing challenges by providing holistic support and fostering their inner strength to build a brighter future. We strive to be a catalyst for change, not just a safety net, guiding individuals toward a hopeful and fulfilling life.



Kol Bonaich thanks its supporters for their generosity that empowered disadvantaged youth in London. Your donations provided essential services and instilled hope, enabling these young people to dream and build a brighter future.

MESSAGE FROM OUR TRUSTEES

At Kol Bonaich, we are dedicated to serving as a vital crash pad for at-risk NEET (Not in Education, Employment, or Training) youth, providing them with a temporary refuge where they can find safety, support, and hope. Our welcoming and informal environment offers more than just a place to rest; it creates a nurturing community where young people who feel alienated or excluded can find a sense of belonging. Our youthful and relaxed atmosphere emphasises accessibility and comfort, ensuring that all basic needs are met while fostering an environment of security and warmth.

Kol Bonaich embodies the spirit of a true crash pad, offering a space where young individuals can pause, regain their footing, and find the encouragement they need to face life's challenges. Through our robust mentorship program, we assist these youth in transitioning back into education, training, or employment, empowering them with the skills and guidance necessary for building brighter futures. **Our goal is to promote a sense of belonging and resilience, helping them navigate their paths forward in a supportive environment that genuinely cares for their well-being.** Together, with the support of our donors, volunteers, and community partners, we are fostering a supportive community that empowers youth to not only survive but thrive.

Thank you for your continued support and commitment to our mission. Together, we are making a difference in the lives of these young individuals, offering them hope and a path to a better future.



WHO ARE “AT-RISK” YOUTH THAT WE HELP?

Antisocial Behaviour:

Teens exhibiting antisocial behaviour, such as substance abuse or addiction, leading to a range of challenges including health problems, legal issues, and impaired social functioning.

Trauma:

Teens who have experienced trauma, whether physical, emotional, or psychological, may be at increased risk for various negative outcomes.

Rejection:

Youth who are NEET (Not in Education, Employment, or Training) often feel alienated and excluded due to limited access to educational and social opportunities, which increases their risk of isolation and mental health issues.

Impoverished & isolated:

Youth who are impoverished and isolated, coming from low-income backgrounds or facing financial difficulties, and who have conduct disorders or learning disabilities, may become involved in criminal activities

Suicidal Ideation:

Socially vulnerable teens struggling with mental health disorders or overwhelming stress experience suicidal thoughts or behaviours, needing immediate intervention & support.

Kicked out:

Youth who have been expelled from their homes or schools, often leading to homelessness or involvement in risky behaviours.



WHAT WE DO

Kol Bonaich provides a safe haven and vital resources for London's struggling youth.

We offer NEET teens at risk a comprehensive support system, including free meals, companionship, job training, and crisis assistance, significantly improving their well-being, enhancing their skills, and fostering resilience to overcome challenges and build a brighter future.



Your contribution helps us empower at-risk NEET teens with comprehensive support, driving significant improvements in well-being, job readiness, resilience, and future success.

Kol Bonaich:
Support, guidance, and encouragement for a brighter future.

EMPOWERING LONDON'S YOUTH ON THEIR PATH TO SUCCESS.



Empty stomachs can't dream big! Kol Bonaich's food programs keep young bellies full and minds sharp.

GRUB UP & GROW

Fueling Young Minds & Bodies



The streets ain't a home. Kol Bonaich offers a safe haven for youth, giving them a chance to stand tall.

CRASH PAD, NOT COLD PAD

Escape the Streets, Find Your Feet

EDUCATION

STUCK ON LEARN?



Kol Bonaich provides 1-1 specialised educational programs for exceptional individuals who learn differently.

We support NEET youth as well as individuals with learning disabilities and autism spectrum disorders.



BURDENS TOO BIG?

MENTAL HEALTH SUPPORT

Kol Bonaich provides professional mental health support for young people facing trauma, abuse, or just needing a helping hand.

We provide one to one counselling for young people facing trauma, abuse, or everyday challenges.





30

weekly hours
of therapy

70

beneficiaries

20

weekly hours
of services

40

volunteers

300

freshly cooked
nutritious meals
per week

OUR IMPACT

At Kol Bonaich, we transform lives by supporting at-risk youth with comprehensive services

including education, mental health support, and job training. Our dedicated team empowers NEET young people to overcome challenges and achieve their potential.

Your investment can shape brighter futures.

FUTURE PLANS



Music Therapy



Dance Classes



Gardening



Swimming



Sports



PROGRAM OUTCOMES IN SUPPORTING TEENS AT RISK

| | | | | | | |
|---|--|--|---|--|--|---|
| | | | | | | |
| <p>Openness to change:</p> <p>Our recreational and vocational programs support teens in adapting to positive changes, embracing new experiences, and developing the skills and confidence necessary for a successful future.</p> | <p>Unconditional love & support:</p> <p>Teens at risk benefit profoundly from the unwavering support of Kol Bonaich coaches, educators, and positive role models, who provide assistance without judgment. This supportive environment helps them overcome challenges, reduce isolation, and feel valued.</p> | <p>Transformation</p> <p>Kol Bonaich's one-to-one mentorship programs led by positive role models created substantial change which demonstrated the significant benefits of personalised guidance in helping at-risk youth return to education, training, and employment.</p> | <p>Community Integration:</p> <p>Our career exploration programs helped these teens identify their interests and strengths, explore various career paths, and set goals for their future education and employment, enhancing their overall prospects and integration into society.</p> | <p>Overcoming Adversity</p> <p>Organising programs, and experiential learning opportunities broadens the horizons, exposes them to new experiences, and inspires at-risk youth to navigate and succeed despite their difficult challenging circumstances, leading to positive life changes.</p> | <p>Meals & nutrition:</p> <p>Access to daily free nutritious hot meals in a supportive, warm & welcoming environment significantly improves the health, social connections, and future prospects of NEET teens at risk.</p> | <p>Engagement</p> <p>Safe social and interactive fun & entertainment, enhances their social skills, boosts self-esteem, and fosters inclusion, thereby improving their overall well-being and quality of life.</p> |



Charity Registration No. 1147599

KOL BONAICH

ANNUAL REPORT AND UNAUDITED FINANCIAL STATEMENTS YEAR ENDED 30 SEPTEMBER 2023



| | 2022 | 2021 | 2020 | 2019 |
|---------------------|---------|---------|---------|---------|
| | \$ 0.79 | \$ 0.75 | \$ 1.47 | \$ 1.47 |
| | \$ 0.78 | \$ 0.77 | \$ 1.46 | \$ 1.47 |
| shares outstanding: | 8,402 | 8,497 | 8,397 | 8,555 |
| red per common | 8,465 | 8,570 | 8,489 | 8,646 |
| | \$ 0.20 | \$ 0.16 | \$ 0.40 | \$ 0.17 |



**KOL BONAICH
TRUSTEES REPORT
YEAR ENDED 30 SEPTEMBER 2023**

The trustees present their annual report and financial statements of the charity for the year ended 30 September 2023.

Reference and Administrative Details

| | |
|--------------------------------|---|
| Trustees | Mr L Y Schapiro Mrs M Shechter Mrs P Gluck |
| Charity Registration No | 1147599 |
| Registered Office | 19 Moundfield Road London N16 6DT |
| Independent Examiner | Kyver & Dale Consultants Ltd Suite 101, Pride House Shanklin Road London N15 4FB |

Structure and Objectives

The charity is a Charitable Trust and controlled by its governing document. The trust was registered as a charity with the Charity Commission on 14 March 2012.

The above trustees served throughout the period. The Board has the power to appoint additional trustees, as it considers fit. None of the trustees have any beneficial interest in the charity and did not receive any remuneration. The trustees are involved with in the running of the charity.

The objects of the charity are: -

1. To advance in life and help young people in need or at risk so as to develop their skills, capacities and capabilities and improve their conditions of life in order to enable them to gain employment and to participate in society as independent and responsible individuals;
2. To provide or assist in the provision of educational, recreational and leisure time facilities and activities for persons who have such need by reason of their youth, age, disability poverty or social and economic circumstances with a view of improving the conditions of life of such persons;
3. To provide help, support and counselling for young people who are at risk of addiction or dependency on drug and/or alcohol abuse and to help relieve distress of their families, friends, carers and the wider community;
4. The advancement of such other objects as are for the benefit of the public and are charitable according to the laws of England & Wales.

Developments and Activities

The charity was set-up in the interest of helping kids in pain, teens at risk, preparing them with a route to a promising and fulfilling future by providing them with support, services, training and activities. The trustees are pleased to report that the structured activities during the year have been successful and have provided in more detailed statement in the cover pages of the annual accounts.

The trustees consider that the performance of the charity this period has been most satisfactory. The trustees have identified the risks to which the charity may be exposed and systems have been established to mitigate these risks. The trustees have had due regard to guidance published by the Charity Commission, including public benefit guidance.

**KOL BONAICH
TRUSTEES REPORT
YEAR ENDED 30 SEPTEMBER 2023
(Continued)**

During the year, the charity received donations of £461,619 (2022 - £495,689) and expensed £460,947 (2022 - £335,120) through charitable expenditure and support costs.

Reserves

Reserves of £200,589 (2022 - £199,917) represent the available funds at the year end. The present level of funding is adequate to support the continuation of the charity's activities.

Responsibilities of the Trustees

Charity Law requires the trustees to prepare a report and financial statements for each financial period which give a true and fair view of the state of affairs of the charity at the end of the year. These must be in accordance with applicable law and regulations and in accordance with United Kingdom Generally Accepted Accounting Practice (UK GAAP).

The trustees must not approve the financial statements unless they are satisfied that they give a true and fair view of the state of affairs of the charity and of its surplus or deficit for that period.

In preparing these financial statements, the trustees are required to select suitable accounting policies, and then apply them on a consistent basis, making judgments and estimates that are prudent and reasonable. The trustees must also prepare the financial statements on the going concern basis unless it is inappropriate to presume that the charity will continue its activities.

The trustees are responsible for keeping adequate accounting records which are sufficient to show and explain the charity's transactions and disclose, with reasonable accuracy at any time, the financial position of the charity and to enable them to ensure that the financial statements comply with Charity Law. The trustees are also responsible for safeguarding the assets and activities of the charity and hence for taking reasonable steps for the prevention and detection of fraud and other irregularities.

Approved on 29 July 2024 and signed on behalf of the Board of Trustees:


.....
Mr L Y Schapiro
Trustee



**KOL BONAICH
INDEPENDENT EXAMINERS REPORT
TO THE TRUSTEES OF KOL BONAICH
YEAR ENDED 30 SEPTEMBER 2023**

I report to the trustees on my examination of the financial statements of Kol Bonaich for the year ended 30 September 2023 which comprise the Statement of Financial Activities, the Balance Sheet and related notes.

Respective Responsibilities of the Trustees and the Examiners

The trustees of the charity are responsible for the preparation of the accounts in accordance with the requirements of the Charities Act 2011 ('the 2011 Act').

Having satisfied myself that the accounts of the Charity are not required to be audited under the Charities Act and are eligible for independent examination, I report in respect of my examination of your charity's accounts as carried out under section 145 of the Charities Act 2011 ('the 2011 Act'). In carrying out my examination I have followed the Directions given by the Charity Commission under section 145(5) (b) of the 2011 Act.

Basis of Independent Examiners' report

Our examination was carried out in accordance with the General Directions given by the Charity Commission. An examination includes a review of the accounting record kept by the charity and a comparison of the accounts presented with those records. It also includes consideration of any unusual items or disclosures in the accounts and the seeking of explanations from the trustees concerning any such matter. The procedures undertaken do not provide all the evidence that would be required in an audit and, consequently no opinion is given as to whether the accounts present a 'true and fair view' and that report is limited to those matters set out in the statement below.


Independent Examiners' Statement

As your examiner must be a member of a body listed in section 145 of the 2011 Act, I confirm that I am qualified to undertake the examination being a fellow member of The Association of Accounting Technicians (AAT) which is one of the listed bodies.

Following my examination, I confirm that no matters have come to my attention in connection with the examination giving me cause to believe:

1. Accounting records were not kept in respect of the Charity as required by section 130 of the 2011 Act; or
2. The accounts do not accord with those records; or
3. The accounts do not comply with the accounting requirements of the 2011 Act other than any requirement that the accounts give a 'true and fair view' which is not a matter considered as part of an independent examination.

I have no concerns and have come across no other matters in connection with the examination to which attention should be drawn in this report in order to enable a proper understanding of the accounts to be reached.


Jacob Jakobovits FMAAT
Independent Examiner
For Kyver & Dale Consultants Ltd
Suite 101, Pride House, Shanklin Road
London N15 4FB

Date: 29 July 2024

**KOL BONAICH
STATEMENT OF FINANCIAL ACTIVITIES
YEAR ENDED 30 SEPTEMBER 2023**

| | Notes | Unrestricted Funds £ | 2023 Restricted Funds £ | Total Funds £ | 2022 Total Funds £ |
|------------------------------------|-------|-------------------------|-------------------------------|------------------|--------------------------|
| Income | | | | | |
| Donations and grants | 3 | 333,568 | 128,051 | 461,619 | 495,689 |
| Total Income | | <u>333,568</u> | <u>128,051</u> | <u>461,619</u> | <u>495,689</u> |
| Expenditure | | | | | |
| Charitable expenditure | 4 | 332,131 | 113,932 | 446,063 | 344,812 |
| Administrative expenses | 5 | 14,884 | - | 14,884 | 10,308 |
| Total Expenditure | | <u>347,015</u> | <u>113,932</u> | <u>460,947</u> | <u>355,120</u> |
| Net Income for the Year | | (13,447) | 14,119 | 672 | 140,569 |
| Transfer between funds | 11 | | | | |
| Net movement in funds | | | | | |
| Reconciliation of funds | | | | | |
| Total funds brought forward | | 199,917 | - | 199,917 | 59,348 |
| Total funds carried forward | | <u>186,470</u> | <u>14,119</u> | <u>200,589</u> | <u>199,917</u> |


The statement of financial activities includes all gains and losses recognised in the year.
All income and expenditure derive from continuing activities.



KOL BONAICH
STATEMENT OF FINANCIAL POSITION
YEAR ENDED 30 SEPTEMBER 2023

| | Notes | 2023 Total Funds £ | 2022 Total Funds £ |
|--|-------|-----------------------------|-----------------------------|
| Fixed Assets | | | |
| Tangible assets | 6 | 7,770 | 9,141 |
| Current Assets | | | |
| Debtors | | 8,342 | 10,118 |
| Cash at bank and in hand | | 215,028 | 219,414 |
| | | <u>223,370</u> | <u>229,532</u> |
| Creditors | | | |
| Amounts falling due within one year | 8 | (1,500) | (1,500) |
| Net current assets | | <u>221,870</u> | <u>228,032</u> |
| Total assets less current liabilities | | 229,640 | 237,173 |
| Creditors | | | |
| Amounts falling after more than one year | 9 | (29,051) | (37,256) |
| Net Assets | | <u>200,589</u> | <u>199,917</u> |
| Reconciliation of funds | | | |
| Unrestricted funds | | 186,470 | 199,917 |
| Restricted Funds | | 14,119 | - |
| Total Funds | | <u>200,589</u> | <u>199,917</u> |

These financial statements were approved by the board of trustees and authorised for issue on 29 July 2024, and are signed on their behalf by:


.....
Mr L Y Schapiro
Trustee

KOL BONAICH
NOTES TO THE ACCOUNTS
YEAR ENDED 30 SEPTEMBER 2023

1. General Information

Kol Bonaich is a charitable trust governed by its trust deed and is a registered charity in England. The registered office is located at 19 Moundfield Road London N16 6DT.

2. Accounting Policies

Basis of Accounting

The accounts have been prepared under the historical cost convention and in accordance with the Charities Act and applicable accounting standards including the SORP (FRS 102) subject to the revaluation of certain fixed assets and the non-provision of depreciation thereon.

The presentation currency is sterling.

Going Concern

The accounts have been prepared on a going concern basis as there are no material uncertainties about the charity's ability to continue.

Incoming Resources

All income is recognised in the Statement of Financial Activities once the charity has entitlement to the funds. It is probable that the income will be received and the amount can be measured reliably.

Resources Expended

Expenditure is accounted for on an accruals basis and has been classified under headings that aggregate all cost related to the category. Where costs cannot be directly attributed to particular headings they have been allocated to activities on a basis consistent with the use of resources. Liabilities are recognised as expenditure as soon as there is a legal or constructive obligation committing the charity to that expenditure, it is probable that a transfer of economic benefits will be required in settlement and the amount of the obligation can be measured reliably.

Fund Accounting

Unrestricted funds can be used in accordance with the charitable objectives at the discretion of the trustees. Restricted funds can only be used for particular restricted purposes within the objects of the charity. Restrictions arise when specified by the donor or when funds are raised for particular restricted purposes.

Tangible Assets

Depreciation is provided at the following annual rates in order to write off each asset over the useful economic life of the asset, as follows;

| | |
|------------------------|-------------------------|
| Fixtures and fittings: | 15% on reducing balance |
| Equipment: | 15% on reducing balance |

///Cont.

KOL BONAICH
NOTES TO THE ACCOUNTS - continued
YEAR ENDED 30 SEPTEMBER 2023

| 3) Income | Unrestricted Funds | Restricted Funds | Total Funds 2023 |
|----------------------------|-----------------------|---------------------|---------------------|
| | £ | £ | £ |
| Donations and grants (KB) | 333,568 | 75,581 | 409,149 |
| Donations and grants (JCC) | | 52,470 | 52,470 |
| | <u>333,568</u> | <u>128,051</u> | <u>461,619</u> |
| | Unrestricted Funds | Restricted Funds | Total Funds 2022 |
| | £ | £ | £ |
| Donations and grants (KB) | 237,333 | 80,630 | 317,963 |
| Donations and grants (JCC) | | 177,726 | 177,726 |
| | <u>237,333</u> | <u>258,356</u> | <u>495,689</u> |

Grants noted above for JCC were grants received and expended for the JCC. All funds were held and recorded in a separate bank account under the charity.

| | 2023 | 2022 |
|---|----------------|----------------|
| | £ | £ |
| 4) Charitable Expenditure | | |
| Educational, employment, mentoring, mental health and well-being programs | 187,036 | 108,861 |
| Food programs | 186,773 | 194,608 |
| After school club and premises costs | 72,254 | 41,343 |
| | <u>446,063</u> | <u>344,812</u> |

| | | |
|-----------------------------------|---------------|---------------|
| 5) Administrative Expenses | | |
| Independent Examiners fees | 1,500 | 1,500 |
| Depreciation | 1,371 | 1,613 |
| Insurance | 9,738 | 6,732 |
| Bank Interest | 841 | 463 |
| Other costs | 1,434 | - |
| | <u>14,884</u> | <u>10,308</u> |

| 6) Tangible Assets | Fixtures & Fittings £ | Equipment £ | Total £ |
|-----------------------|-----------------------------|----------------|---------------|
| Cost | | | |
| At 01 October 2022 | 7,090 | 6,400 | 13,490 |
| Additions | | | - |
| At 30 September 2023 | <u>7,090</u> | <u>6,400</u> | <u>13,490</u> |
| Depreciation | | | |
| At 01 October 2022 | 3,389 | 960 | 4,349 |
| Charge for the year | 555 | 816 | 1,371 |
| At 30 September 2023 | <u>3,944</u> | <u>1,776</u> | <u>5,720</u> |
| Net Book Value | | | |
| At 30 September 2023 | <u>3,146</u> | <u>4,624</u> | <u>7,770</u> |
| At 30 September 2022 | <u>3,701</u> | <u>5,440</u> | <u>9,141</u> |

KOL BONAICH
NOTES TO THE ACCOUNTS - continued
YEAR ENDED 30 SEPTEMBER 2023

| | | |
|---|--------------|--------------|
| 7) Debtors | 2023 | 2022 |
| | £ | £ |
| Trade debtors | 8,342 | 10,118 |
| 8) Creditors: amounts falling due within one year | 2023 | 2022 |
| | £ | £ |
| Trade creditors | - | - |
| Other creditors | 1,500 | 1,500 |
| | <u>1,500</u> | <u>1,500</u> |
| 9) Creditors: amounts falling after more than one year | 2023 | 2022 |
| | £ | £ |
| Bank loans (falling due between two and five years) | 29,051 | 37,745 |
| 10) Average number of staff | | |
| The average number of staff during the year was 3 (2022: 3) | | |
| 11) Net movement in funds | | |
| It is the policy of the charity to move restricted funds to unrestricted funds once it has been spent unless there are restricting conditions even after the income has been spent. | | |

| | Unrestricted Funds £ | Restricted Funds £ | Total £ |
|---|----------------------------|--------------------------|----------------|
| At 30 September 2022 | 199,917 | - | 199,917 |
| Incoming resources | 333,568 | 128,051 | 461,619 |
| Expended resources | (347,015) | (113,932) | (460,947) |
| Total funds available for future activities | | | |
| At 30 September 2023 | <u>186,470</u> | <u>14,119</u> | <u>200,589</u> |

Comparatives for movements in funds;

| | Unrestricted Funds £ | Restricted Funds £ | Total £ |
|---|----------------------------|--------------------------|----------------|
| At 30 September 2021 | 59,348 | - | 59,348 |
| Incoming resources | 237,333 | 258,356 | 495,689 |
| Expended resources | (96,764) | (258,356) | (355,120) |
| Total funds available for future activities | | | |
| At 30 September 2022 | <u>199,917</u> | <u>-</u> | <u>199,917</u> |

| | |
|---|--|
| 12) Related party transactions | |
| Donations received and expended include amounts from companies/charities with directors/trustees in common with those of the charity. | |
| The charity held funds for the JCC in a separate account, where both have a common trustee/director. | |

From Shadows to Sunlight Daniel's Story: Finding His Voice

“ Daniel, trapped in a silent world, found solace in Kol Bonaich. With compassionate guidance, he conquered his inner demons. Now, a symbol of resilience, he inspires others. Kol Bonaich transformed his life, proving it's more than a support system; it's a catalyst for change. ”

From Shadows to Spotlight David's Journey: From Street to Studio

“ David's life was once a bleak canvas. The streets were his home until Kol Bonaich Youth Center became his sanctuary. Mentors guided him, and his hidden artistic talent flourished. With the center's support, he transformed into a skilled graphic designer. David's journey is a testament to the center's power to transform lives. ”